

PROJECT PROFILE | SWARTHMORE COLLEGE – THE MATCHBOX | SWARTHMORE, PA

ARCHITECT

DIGSAU
Philadelphia, PA
(215) 627-0808

VAPROSHIELD REPRESENTATIVE

Joe Lazorick, Thomco, Inc.
Newark, DE
jlazorick@thomco1.com
(302) 454-0361

INSTALLER

Wallworks Inc.
Chester, PA
(610) 874-1070 x203

PRODUCT(S)

WRAPSHIELD SA[®] SELF-ADHERED Water Resistive Vapor Permeable Air Barrier Membrane
VAPROLIQUI-FLASH[™] Vapor Permeable Liquid Applied Flashing

PROJECT DESCRIPTION

Over 9,000 sq. ft. of WrapShield SA Self-Adhered Water Resistive Vapor Permeable Air Barrier Membrane was installed on The Matchbox at Swarthmore College in Swarthmore, PA. The Matchbox is a 21,000 sq. ft. campus facility for athletics, wellness and theater. It is built atop the existing foundation of the old squash court facility.

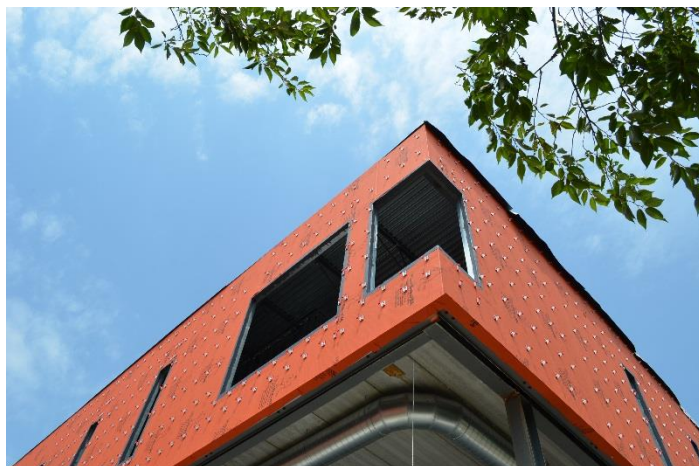
The project will incorporate and be a model for sustainability and flexibility. The building's 'glass skin' takes in passive solar energy, and a state-of-the-art active monitoring system ensures fresh air is circulated into the building based on actual occupancy.

WrapShield SA Self-Adhered offers:

- DOES NOT REQUIRE A PRIMER
- Secondary Rain Barrier
- Zero VOC's, (no off-gassing)
- Low Temperature Applications
- Fire Rated, Class A to ASTM E 84
- 6 Months UV & Climate Exposure
- High Temperature Resistance
- Tough, Durable, Tear Resistant
- Contributes to LEED points



Over 9,000 sq.ft. of WrapShield SA Self-Adhered Water Resistive Vapor Permeable Air Barrier was installed on The Matchbox at Swarthmore College.



As a model for sustainability and flexibility, The Matchbox is built atop the original building footprint.



WrapShield SA Self-Adhered contributed to the building's sustainability because of it being 100% recyclable, having zero VOC's and not requiring primer.