

## VaproLiqui-Shield™

a fluid-applied vapor permeable water resistive (WRB) air barrier (AB)

Product No.: 58304600, 5 gallon (18.9 liters) Pail

Product No.: 58300299, 52 gallon (197 liters) Drum



### Tools



PPE (as required by local jurisdiction),



**Spray Application:**  
Professional airless spray equipment producing 4000 psi at the gun | optimal 5,000-6,500 at pump.



**Roller Application:**  
Standard 3/8-inch nap roller



**Detail Work:**  
brush, trowel, or putty knife



Wet mil gauge

### Accessories



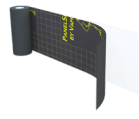
VaproAirSeal



VaproLiqui-Flash



VaproFlashing SA



PanelFlashing



VaproShield Sausage Gun

### Delivery, Packaging and Storage

Store VaproLiquid-Shield in a cool, dry place. Keep container tightly closed when not dispensing. Do not open container until preparation work has been completed. Do not alter or mix with other chemicals. VaproLiqui-Shield may be stored for 18 months post manufacture date in a closed (unopened) container in a dry place at temperatures between 41°F to 86°F (+5°C and +30°C). This shelf life assumes upright storage of factory-sealed containers. Dispose of unused product and container in accordance with local, state and federal regulations.

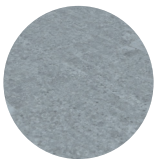
### Climate and UV Exposure

- Up to 12 months UV and climate exposure prior to cladding installation.
- Acceptable for open joint cladding installations.

### Substrate Preparation

- Surfaces must be clean and free of frost, oil, grease, dirt, excess mortar, or other contaminants.
- New concrete should be cured for a minimum of three (3) days.
- Fresh mortar joints in CMU should be struck flush and cured for a minimum 36 hours.

### Compatible Substrates



Concrete



CMU Block



Plywood



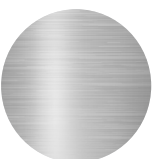
Framing Lumber



OSB



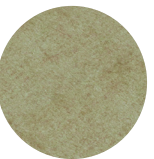
Brick



Metal  
(Steel, Aluminum)



MGO Board



Exterior Gypsum Sheathing

**Contact VaproShield Technical** – if you have additional substrate or technical questions.

### Do's

- DO use VaproShield approved products for this system
- DO install VaproLiqui-Shield at 20 dry mil thickness
- DO spray or roll apply VaproLiqui-Shield
- DO store container in a dry place at 41°F to 86°F (+5°C and +30°C)
- DO check mil thickness about every 1000 ft<sup>2</sup> (93 m<sup>2</sup>)
- DO apply VaproLiqui-Shield at 32°F (0°C) and rising

### Don't's

- DON'T leave exposed to UV and weather for over 12 months prior cladding installation
- DON'T store materials in direct sunlight and inclement weather until ready for use
- DON'T install on dirty or contaminated substrates

# INSTALLATION INSTRUCTIONS

VaproLiqui-Shield Product No.: 58304600, 5 gallon (18.9 liters) Pail / Product No.: 58300299, 52 gallon (197 liters) Drum

## Safety

Read the full label and SDS for precautionary instructions before use. Use with adequate ventilation, safety equipment, and jobsite controls during application and handling.

Refer to OSHA guidelines for all jobsite equipment including spray equipment.

### FIRST AID

Ingestion: If swallowed: Clean mouth with water. If symptoms occur, obtain medical advice. For additional information, see Safety Data Sheet. Small amounts of methanol (CAS 67-56-1) are formed by hydrolysis and released upon curing.

Eye Contact: Flush eyes for at least 15 minutes. Skin Contact: Wash with plenty of soap and water. Inhalation: Remove to fresh air.

## Cure/Dry Time

- Rain-ready in approximately 40 mins.
- Approximate skin-skin over time: 40-50 mins.
- Approximate dry time: 4 hours.

**Note:** All curing/drying speeds are directly influenced by environmental conditions such as humidity, temperature and atmospheric pressure.

## Clean-Up

Clean uncured VaproLiqui-Shield and VaproLiqui-Flash with mineral spirits immediately after use. Follow all safety precautions. Mechanically remove cured material.

## Coverage

Coverage rates to achieve 21 perms at 20 mils (0.5mm) thickness.

COVERAGE ESTIMATOR	
Substrate Type	Coverage Rate
Smooth Substrates (sheathing, metal etc.)	60 – 75 ft <sup>2</sup> /gal (5.6 – 7.0 m <sup>2</sup> /3.8 liters)
Porous Substrates (CMU, concrete etc.)	40 – 60 ft <sup>2</sup> /gal (3.7 – 5.6 m <sup>2</sup> /3.8 liters)

## Additional Details and Sequences

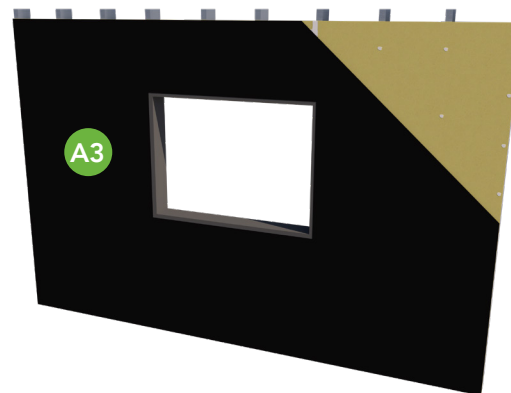
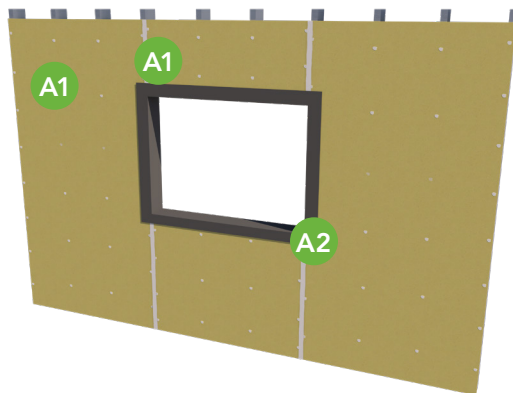
Scan QR code for additional sequences and details or Contact us at 866-731-7663, or email: [technical@vaproshield.com](mailto:technical@vaproshield.com).



## Technical Guidelines

### PERMEABLE ROUGH OPENING APPLICATION: SEAMS LESS THAN ¼"

**Note:** Before beginning, make sure all sheathing materials are clean, free of dust, frost, overnight dew and trimmed flush with framing members at rough openings and that all materials, sausage gun, and putty knife are on site. Evaluate substrate for any inefficiencies and cracks.



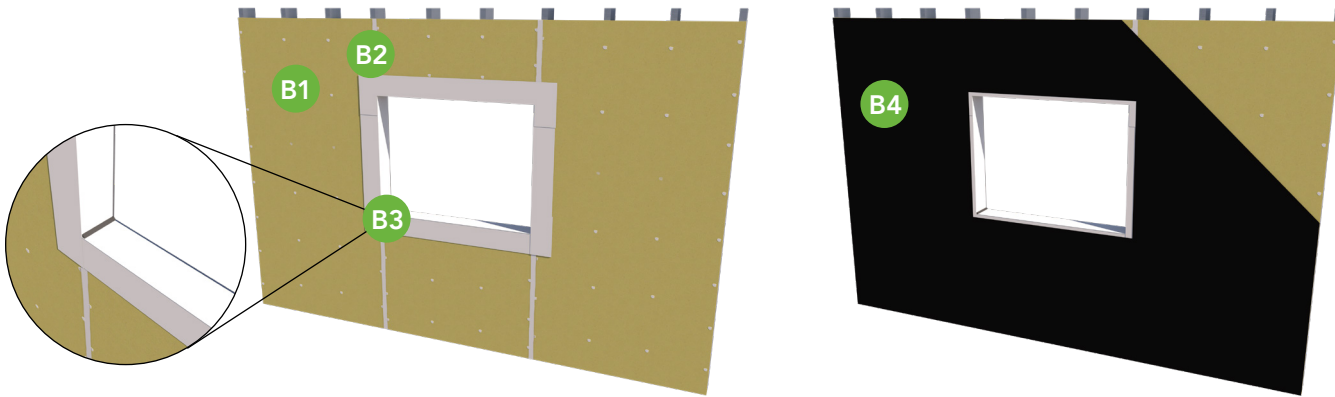
- A1** Apply VaproAirSeal along the raw edge of the gypsum sheathing and fill all fastener penetrations. Refer to the VaproAirSeal Product Data Sheet for best practices.
- A2** Apply a liberal coat of VaproLiqui-Flash around the entire rough opening, maintaining a thickness of 12–15 mils (0.30–0.38 mm), and tool to create positive drainage. Refer to the VaproLiqui-Flash installation instructions for best practices.
- A3** After all reinforced details are tack-free, begin the VaproLiqui-Shield field application. See step D.

# INSTALLATION INSTRUCTIONS

VaproLiqui-Shield Product No.: 58304600, 5 gallon (18.9 liters) Pail / Product No.: 58300299, 52 gallon (197 liters) Drum

## IMPERMEABLE ROUGH OPENING: SEAMS LESS THAN 1/4"

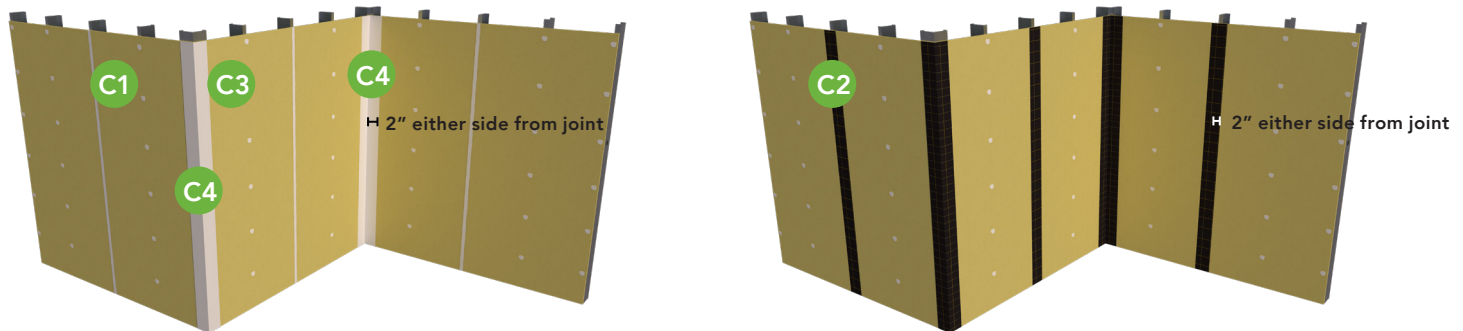
**Note:** Before beginning, make sure all sheathing materials are clean, free of dust, frost, overnight dew and trimmed flush with framing members at rough openings and that all materials, sausage gun, and putty knife are on site. Evaluate substrate for any inefficiencies and cracks.



- B1** Using VaproAirSeal, fill all fastener penetrations and tool flush. Refer to the VaproAirSeal Product Data Sheet for best practices.
- B2** Apply VaproFlashing SA in the rough opening, leaving 2" on the face. Roll flashing to activate the adhesive.
- B3** Tool a bead of VaproAirSeal or approved sealant in EACH corner.
- B4** After all reinforced details are tack-free, begin the VaproLiqui-Shield field application. See step D.

## SHEATHING JOINTS, CORNERS AND FASTENER PENETRATIONS

**Note:** Before beginning, make sure all sheathing materials are clean, free of dust, frost, overnight dew and trimmed flush with framing members at rough openings and that all materials, sausage gun, and putty knife are on site. Evaluate substrate for any inefficiencies and cracks.



- C1 JOINTS 0"-1/4"**  
For joints less than 1/4" apply a bead of VaproAirSeal, filling the joint and strike flush.
- C2 JOINTS 1/4"-1/2"**  
Install VaproFlashing SA or PanelFlashing centered over the joint, extending out a minimum of 2" on either side.  
**REINFORCEMENT MESH:** Approved application for all corners and joints 1/4"-1/2". Use VaproShield-approved mesh tape. For specific sequencing requirements, refer to the VaproLiqui-Shield Mesh Tape Details at VaproShield.com.
- C3 FASTENER PENETRATIONS**  
Fasteners should be finished flush into the sheathing. Fastener shall not protrude the face of the sheathing. Fasteners must be filled with a bead of VaproAirSeal and

struck flush. Counter sunk fasteners that are finished flush with the substrates do not require further detailing before the installation of VaproLiqui-Shield.

- C4 INSIDE/OUTSIDE CORNERS**  
Install VaproFlashing centered over the joint, extending out a minimum of 2" on either side. Inside and outside corners in cast-in-place concrete or laced CMU walls do not require additional detailing at inside/outside corners.

**Note:** For joints larger 1/2" use extra supportive material. Insert non-gassing backer rod or as specified by designer. Use VaproAirSeal to treat backer rod.

### EXPANSION/FLOORLINE JOINTS

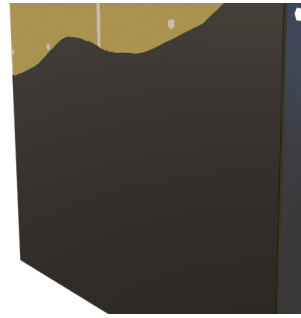
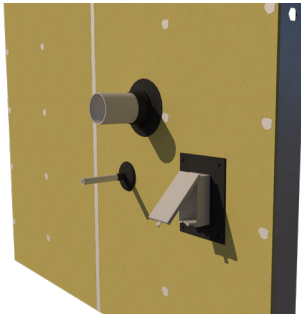
View details at [VaproShield.com](http://VaproShield.com)



# INSTALLATION INSTRUCTIONS

VaproLiqui-Shield Product No.: 58304600, 5 gallon (18.9 liters) Pail / Product No.: 58300299, 52 gallon (197 liters) Drum

## PENETRATIONS



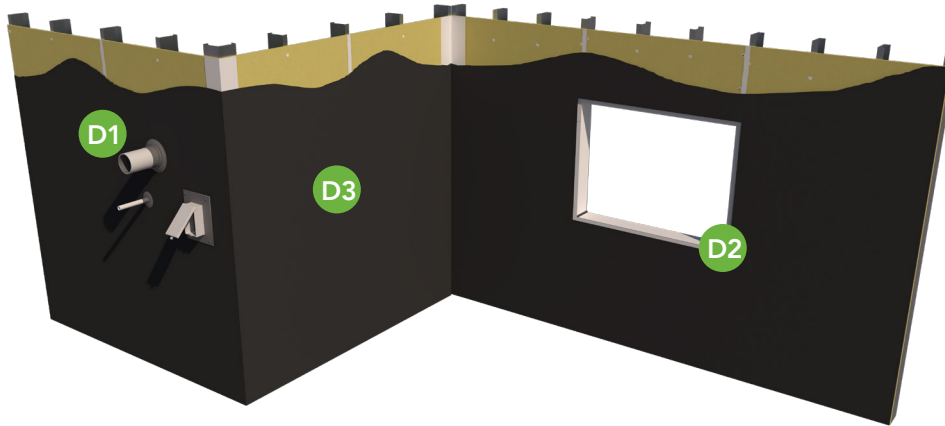
Detailing BEFORE VaproLiqui-Shield is applied

Detailing AFTER VaproLiqui-Shield is applied

- All penetrations should be treated with VaproLiqui-Flash at 2" onto face and at least 1" out long all sides of the penetration.
- Tool VaproLiqui-Flash smooth around penetration to shed water.

**Note:** Reference [VaproShield.com/details](http://VaproShield.com/details), VaproLiqui-Flash for best practices.

## FIELD APPLICATION



- D1** After all reinforced details are tack-free, begin the VaproLiqui-Shield field application. Apply VaproLiqui-Shield by roller, brush, or VaproShield approved spray equipment, maintaining a 20-mil wet film thickness.
- D2** Overlap onto details by minimum 2" to maintain air barrier continuity. VaproLiqui-Shield may be applied in either a horizontal or vertical orientation. Maintain the same application direction for the entire installation.
- D3** Monitor the membrane thickness throughout application using a wet mil gauge, and check frequently to ensure a consistent 20-mil wet thickness.